



Rabbit anti NF- κ B p100/p52(pS865) Polyclonal Antibody

Alternative Name(s): nuclear factor kappa B subunit p52/p100; NF κ B

Order Information

- **Description:** NF- κ B p100/p52(pS865)
- **Catalogue:** 500-11874
- **Lot:** See label
- **Size:** 100ug/200ul
- **Host:** Rabbit
- **Clone:** nan
- **Application:** IHC(P), WB, IP
- **Reactivity:** Hu, Ms

ANTIGEN PREPARATION

A synthetic peptide corresponding to the epitope containing a phosphorylation site Ser 865 of human NF κ B/p100/p52 protein. This sequence is identical within human and mouse.

BACKGROUND

NF κ B is a heterodimer that consists of a 50 kDa DNA binding subunit (p50/NF κ B1) and a 65 kDa transactivation subunit (p65/RelA). Both of these subunits exhibit sequence homology to the proto-oncogene c-Rel. The p50 has an isoform called p49/p52, and both proteins are derived from the amino-terminal of precursor protein p105 and p100. The p50/p65 heterodimer remains in the cytosol in an inactive form as a complex with its inhibitor, I κ B. Upon stimulation of cells by a wide variety of stimuli such as lipopolysaccharide (LPS), pro-inflammatory cytokines (IL-1 & TNF, etc.), and viral infection, I κ B is phosphorylated and degraded by proteasome. The active NF κ B heterodimer is translocated into the nucleus and induces gene expression. The inhibition of p53 activity is dependent upon phosphorylation of p65 (RelA) at S536 by the upstream kinase IKK beta.

PURIFICATION

The Rabbit IgG is purified by site-modified Epitope Affinity Purification.

FORMULATION

This affinity purified antibody is supplied in sterile Tris-buffered saline (pH7.2) containing antibody stabilizer

SPECIFICITY

This antibody recognizes NF κ B p100/p52 with the phosphorylation site Ser865. It does not cross-react with non-phosphospecific peptide.

STORAGE

The antibodies are stable for 24 months from date of receipt when stored at -20oC to -70oC. The antibodies can be stored at 2oC-8oC for three month without detectable loss of activity. Avoid repeated freezing-thawing cycles.

APPLICATIONS/SUGGESTED WORKING DILUTIONS*

- Western Blot: 0.1-1 μ g/ml
- ELISA: 0.01-0.1 μ g/ml
- Immunoprecipitation: 2-5 μ g/ml
- IHC: 2-10 μ g/ml
- Flow cytometry: Not tested
- Molecular Weight: 52&100
- Positive Control: Kidney Tissue
- Cellular Location: Cell Membrane

*Optimal dilutions should be determined by researchers for the specific applications.

FOR RESEARCH USE ONLY.

AbboMax, Inc 2528 Qume Drive, Suite 8, San Jose, California 95131, USA
1 408-573-1898 (Tel). 1 408-573-1858 (Fax). www.abbomax.com info@abbomax.com

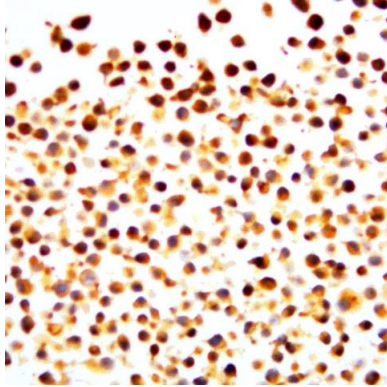


FOR RESEARCH USE ONLY.

AbboMax, Inc 2528 Qume Drive, Suite 8, San Jose, California 95131, USA
1 408-573-1898 (Tel). 1 408-573-1858 (Fax). www.abbomax.com info@abbomax.com



DATA ATTACHMENTS



Immunohistochemistry: The whole cell pallet Hela (FFPE) stained with Rabbit anti-NFkBp100(pS865) (Cat# 500-11874) at 1:200 for 10 min @ RT. Staining of formalin-fixed tissue requires boiling tissue section in 10 mM Citrate Buffer, pH 6.0 for 10 min followed by cooling at RT for 20 min.

REFERENCES

FOR RESEARCH USE ONLY.

AbboMax, Inc 2528 Qume Drive, Suite 8, San Jose, California 95131, USA
1 408-573-1898 (Tel). 1 408-573-1858 (Fax). www.abbomax.com info@abbomax.com